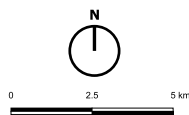


# BETTYHILL GRID ROUTE – CONSTRUCTION



- Proposed Cable Route
- Bettyhill Phase 2 Wind Farm
- ▨ Potential Cable Route Variation
- ▨ Construction Worksite Example



## KEY FACTS

- Construction is expected to take place 2026-27
- We anticipate it will take approximately 9 months
- We will aim to avoid the worst winter conditions as that would prolong the total time taken to complete the project
- The total length of the route is estimated at 31-33 km
- Disturbance will be minor as only 1.3 km of road will be affected at any time
- We intend to have 3 teams working on 3 sections of the route simultaneously
- Each section worked on would be a maximum of 100m long, with approximately 500m between sections
- We expect to complete about 750m per week
- At all times, one lane would be kept open to allow for the smooth flow of traffic
- Traffic would be controlled by traffic lights and also banksmen where required
- Local residents will be updated by a range of communication methods

# FREQUENTLY ASKED QUESTIONS

## WHEN WILL THE PLANNING APPLICATION BE SUBMITTED?

We will be consulting on our plans for 12 weeks, will take any feedback on board, and expect to submit the planning application later this year.

## WILL WE HAVE AN OPPORTUNITY TO COMMENT ON THE PLANNING APPLICATION?

The planning application will be available to view on The Highland Council's planning portal and you will be able to submit your comments directly to the Council. The Council's consultation period is a minimum of 21 days.

## HAVE YOU CARRIED OUT ECOLOGICAL SURVEYS ALONG THE ROUTE?

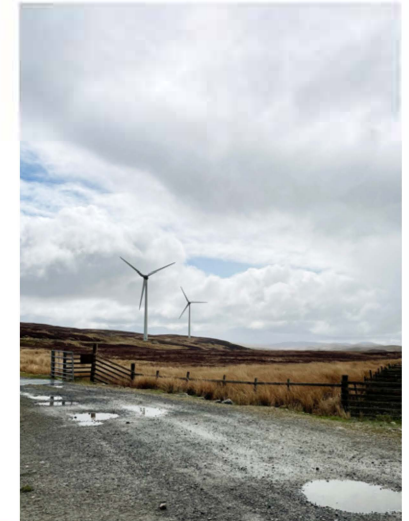
We have carried out an ecological desktop assessment and walkover survey of the site. We are currently awaiting written feedback which will establish what additional ecological surveys are required.



## WHAT OTHER SURVEYS ARE YOU CARRYING OUT?

Peat, hydrological and archaeological desktop assessments and walkover surveys will all be done.

The planning application will be supported by full ecological, peat, hydrological and archaeological assessments, a Construction Traffic Management Plan (CTMP) and potential noise assessment.



## HAVE YOU CONSULTED WITH THE HIGHLAND COUNCIL'S HIGHWAYS TEAM?

We have had extensive consultation with members of THC's Highways team and will be following their guidance on how to proceed with minimal disruption to road users. Communications with THC are ongoing and our safety and traffic management plan will be included in a construction management plan to be approved by them.



# FREQUENTLY ASKED QUESTIONS



## WHY HAVE YOU CHOSEN THIS GRID CONNECTION POINT?

Downreay substation was allocated as our Point of Connection in our connection offer from the local electricity network. The overhead lines that connect the Phase 1 turbines do not have the capacity to take the Phase 2 generation.



## WILL THERE BE ANY NEW CABLES ABOVE GROUND?

No, we are planning to bury all the cables underground. We cannot connect into the existing overhead lines, and building new wooden poles would have an unacceptable visual impact. Most residents we have spoken to prefer the underground option. It is also more straightforward to deliver as the cable trenches will mainly be in the roadside verge, the majority of which is adopted highway with responsibility lying with The Highland Council. Other services already utilise the road verges and we will ensure that constructing the cable route does not disturb existing infrastructure.



## HOW WILL CONSTRUCTION AFFECT TOURISTS ON THE NORTH COAST 500?

We recognise that the A836 is an important tourist route as well as for local residents and businesses. We aim to keep disruption and delays to a minimum by using the construction and traffic management measures outlined above. For the majority of the cable route construction period only 1.3 km of road will be affected at any one time, approximately 4% of the total grid route. We do not think this will have an adverse effect on tourism. We will also ensure that construction schedules are communicated to local businesses and residents well in advance. Please let us know if you would like us to add your details to our contacts list for future communications.



# KEY FACTS – WIND FARM

## EXISTING BETTYHILL WIND FARM

- Installed capacity 6MW
- Two turbines
- Blade tip height 119m
- Operational since 2013
- Community benefit fund £8,000 per year



“A shift towards more localised energy solutions is a vital part of our journey to a net zero future, with local energy developing alongside, and within, a vibrant national energy network.”

**PAUL WHEELHOUSE, MSP, MINISTER FOR ENERGY, CONNECTIVITY AND THE ISLANDS**



## BETTYHILL WIND FARM PHASE 2

- Up to 10 turbines
- Maximum blade tip height of 149.9m
- Battery storage to bring combined maximum capacity to 49.9 MW
- Viable grid connection has been secured with Scottish and Southern Electricity at Dounreay
- Expected life of wind farm 35 years



**SHARED OWNERSHIP**

**44,000 HOMES\*  
SUPPLIED WITH  
CLEAN ENERGY**

## BENEFITS

- Total generation approximately 166,000MWh of renewable, carbon-free electricity (based on 49.9MW capacity)
- Equivalent to typical annual usage of 44,000 homes\*
- Will displace 32,000 tonnes CO<sub>2</sub> from fossil-fuel electricity generation\*\*
- Community benefits equivalent to £5,000 per MW, index-linked (up to £250,000 pa)
- Up to 20% community shared ownership
- Peat restoration across parts of the site and adjacent land to sequester carbon and boost local biodiversity



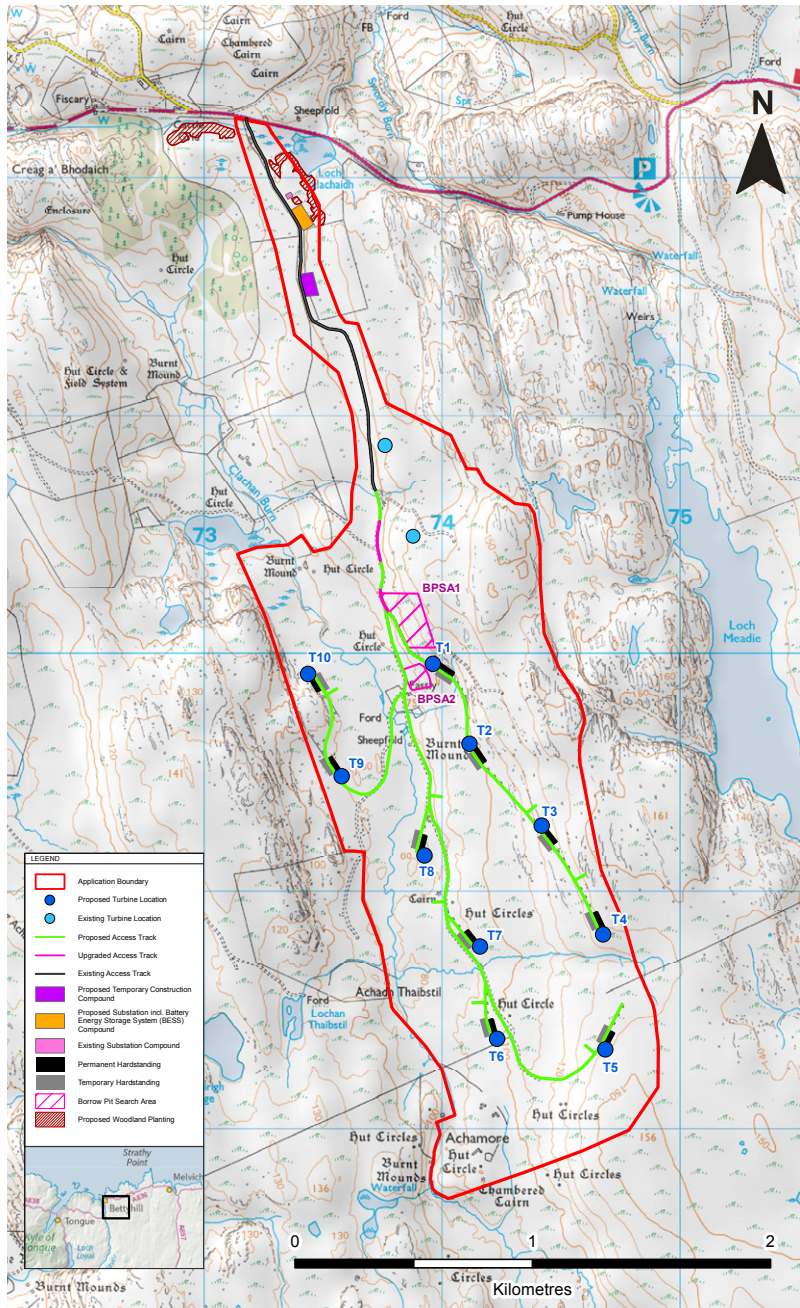
**PEAT RESTORATION**



\* Based on Eden's forecast generation output and energy statistics provided by BEIS, which identify that average UK domestic household consumption is 3,748 kWh per annum (December 2021)

\*\* Based on the Scottish Government's carbon calculator <https://www.gov.scot/publications/carbon-calculator-for-wind-farms-on-scottish-peatlands-factsheet/>

# SITE LAYOUT AND ACCESS



## FEATURES

- Total site area approx 334ha
- Up to 10 turbines (one turbine has been removed from initial layouts since scoping, following surveys and due to the EIA process)
- Maximum blade tip height of 149.9m
- Potential Battery Energy Storage System
- SSE and customer substations
- Temporary construction compound
- Temporary borrow pits for rock extraction
- Existing access tracks reused, plus new tracks
- Hardstandings and laydown areas
- Wind monitoring mast
- Transformers
- Power cables underground

## CONSTRUCTION

- Construction is expected to last approximately 12 months
- Working hours 07:00 – 19:00 Monday to Friday and 07:00 – 16:00 on Saturdays
- Where possible, stone will be sourced from the site
- Construction materials to be sourced locally where possible to reduce traffic movements

## TRANSPORT ROUTE

- The turbine components would be transported from the Port of Scrabster via the A9 to Thurso, and then westwards via Melvich and Strathy to the site entrance on the A386
- The same route was used for both Bettyhill Phase 1 and Strathy North Wind Farm
- Turbine deliveries are considered Abnormal Indivisible Loads (AIL); two AIL delivery days per week for a 3-month period expected
- The total number of HGV movements associated with construction will be 3,224 two-way movements, equating to 16 per day on average during the peak period (months 10 to 12)
- Banksmen and warning signs will be provided where appropriate
- Our transport assessment shows that the increase in HGV movements would remain well within the design capacity of the local road network
- A Construction Traffic Management Plan will be developed after consent

# COMMUNITY BENEFITS



## SHARED OWNERSHIP

Shared ownership enables communities to participate directly in renewable energy developments in their local area. It offers a direct financial stake in a commercially-run wind farm with the potential to earn a commercial return from the energy produced.

Investing in a wind farm carries risk, but can also create significant local opportunities. Impartial advice on how your community can make the most of this is available from Local Energy Scotland, an independent organisation set up by the Scottish Government to promote community and shared ownership.

Eden is committed to offering the community the chance to take a commercial shared ownership stake of up to 20% in Bettyhill Phase 2 in partnership with the Farr North Community Development Trust, a charity set up in 2020 to invest in renewable energy projects and committed to improving the lives of people living in North Sutherland. Profits from the shared ownership stake, although not guaranteed, could at least double the value of community funds over the lifetime of the project, further increasing the potential for social and economic change.

## COMMON GRAZINGS INCOME

The 54 shareholders in Bettyhill Common Grazings represent about a quarter of households in the community council area. They already share a rental income from Bettyhill Phase 1 with the landowner, which will increase substantially with Phase 2, supporting a healthy local economy.

## LOCAL BUSINESSES

We welcome the opportunity for local businesses and contractors to work on the construction and maintenance of the wind farm and will publicise tender opportunities at the appropriate time. Businesses in the tourism sector will benefit from the need for accommodation, food and fuel for the construction workforce during the low season. We have created a database of local businesses who may benefit from construction or operation. Several of these businesses have already noted they may win significant business from the development and asked to be kept informed. Please contact us to add your business to the database.



# COMMUNITY BENEFITS

Eden Renewables believes strongly that people living near our renewable energy projects should share the economic as well as the environmental benefits. Our team has led the industry with our community benefit programmes:

- Substantial financial contributions to community funds delivering meaningful social change
- A ground-breaking education programme
- Community Shared Ownership



“It has been a fantastic opportunity for the children to discuss possible future renewable energy solutions and to be able to relate these to their own schools and local community.”

MRS. PRICE, HEADTEACHER, PACKINGTON PRIMARY SCHOOL, LEICESTERSHIRE

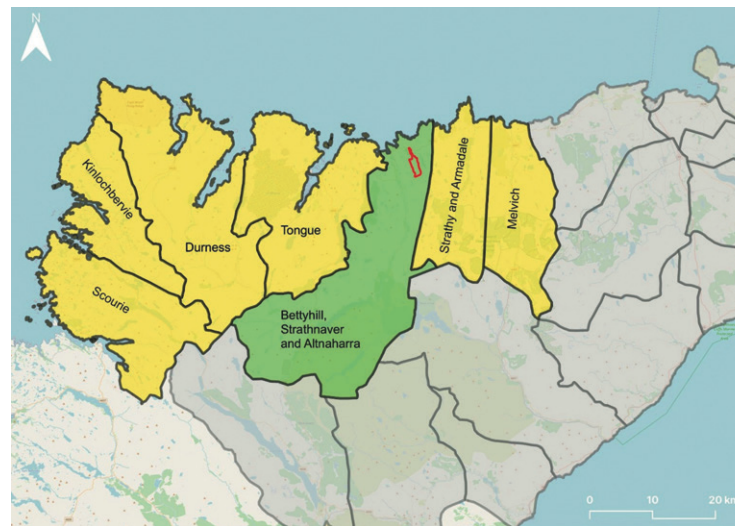
## COMMUNITY BENEFIT FUND

In 2022 the existing Bettyhill turbines contributed almost £8,000 to a community benefit fund managed by Bettyhill, Strathnaver and Altnaharra Community Council. The fund has disbursed over £50,000 since 2015, supporting a very wide range of projects including:

- local Covid-response initiatives
- the Strathnaver Museum’s purchase of the Rosal pre-clearance village and archaeological investigations of Bronze Age remains during its refurbishment
- Evening classes organised by the Farr North Community Development Trust

Bettyhill Phase 2 will see the overall value of community benefits increase over 30-fold, potentially delivering enormous positive social and economic change!

- £5,000 per MW per year, index-linked, for 35 years, in line with Scottish government recommendations
- £250,000 per year, if 50 MW achieved
- over £8.5 million for the lifetime of the project



## BENEFIT AREA

- 50% of the funds to Bettyhill, Strathnaver and Altnaharra as host community
- 50% to be shared with the six neighbouring community councils: Strathly & Armadale, Tongue, Durness, Kinlochbervie, Scourie and Melvich, in a proportion to be agreed by them.

## EDUCATIONAL FUND

Eden has created an innovative educational programme, working with Earth Energy Education, to educate and inspire young people in science, technology, engineering, climate science, energy and ecology. This includes classroom-based learning and field trips to our renewable energy projects. Over 10,000 children across the UK have already benefited from this programme.

The community benefit package would include £5,000, index-linked, per year to deliver this programme to Bettyhill, Melvich and Tongue primary schools and Farr secondary school.

## LOCAL ELECTRICITY DISCOUNT SCHEME

The proposed fund package includes a local electricity discount scheme which has proved very popular during our consultations. Local households, businesses and organisations would receive an annual discount on their electricity bills, ranging from an estimated £30 to £200 depending on community council area. Participation in the scheme is voluntary and is not linked to any particular supplier or tariff.